



 **C. C. E**

"Innovation & Empowering people"

Continuous Construction Gen. Cont Est



Continuous Construction Gen. Cont. Est

CR 2060037767.

Aramco vendor No 10047856

SCECO Vendor No 0005005969

Makkah Street Cross-03,Thuqbah

Al-Khobar 31952 , KSA

Phone : +966 0138977660

Web : www.cceksa.net

Mail : info@cceksa.net



OVERVIEW

- **CONTINUOUS CONSTRUCTION ESTABLISHMENT** was registered and 100% Saudi company on 2003 with the Ministry of Chamber of Commerce under the Commercial Registration No. 2060037767.
- Our company was formed with a commitment to provide “Excellent” available services in the specialized field of Civil works such as Housing/Building Construction, Asphalt Roads and Parking area, Site Development, Mechanical works (Hydraulic bolting / Tensioning).
- Our company offers services which compliments growing range of integrated services that enable us to take any industrial or public works project from concept through planning, design, construction, operations and maintenance. Every element of the firm is structured to ensure that we can leverage our global resources and know-how to satisfy each client’s particular needs.
- The services provided by **CONTINUOUS CONSTRUCTION ESTABLISHMENT** are enhanced through working relationships and association with established International and local contractors, and specialized vendors. Using these strategic alliances, our company can provide a combined team of well qualified personnel to Implement the successful execution of any projects.
- Our company has qualified and experienced Engineers, Technicians and Skilled personnel for all new constructions, modification, installation and commissioning activities related to its civil, mechanical, electrical and instrumentation projects, to meet any client’s requirements.
- Finally, **CONTINUOUS CONSTRUCTION ESTABLISHMENT** places the importance of safety and consequently adheres to a detailed Loss Prevention program. All employees undergo a detailed Safe Working Practices Program and are instructed to strictly follow the program.



COMPANY BIO

Company Name

CONTINUOUS CONSTRUCTION GENERAL CONTRACTING EST.

Address

Thuqba Makkah Street, Cross no:03

AL-Khobar

Kingdom of Saudi Arabia

Nature of Business

Building Construction, Site Development, Asphalt
Road and Parking area, Electrical works
Structural fabrication and Erection,
Man power supply & Rental Equipment's

Commercial Registration No.

2060037767

Telephone Number

+966 013 8977660

Web

www.cceksa.net

Email

info@cceksa.net



POLICY STATEMENT

- **CONTINUOUS CONSTRUCTION ESTABLISHMENT** is committed to provide, to the client's satisfaction, professional "Excellent" services available
- **CONTINUOUS CONSTRUCTION ESTABLISHMENT** also strives to attain and set standards of performance, in our fields of specialization, which would be looked upon by others as a benchmark.
- **CONTINUOUS CONSTRUCTION ESTABLISHMENT** has always accepted the fact that the customer is at the top. Everything we do is geared to meet "total and complete" customer acceptance. With this in mind, we are continuously in a state to develop, improve and share our knowledge and resources to meet the ever-changing needs and demands in this fluctuating construction scenario.
- **CONTINUOUS CONSTRUCTION ESTABLISHMENT** believes in maintaining a workforce of qualified employees who match the stringent work culture required to meet standards higher than those set by the industry.
- To this end, **CONTINUOUS CONSTRUCTION ESTABLISHMENT** has qualified and experienced managers, engineers, scheduler, inspectors, foremen, leadsmen, skilled workers and other necessary backup crews.

COMMERCIAL & INFRASTRUCTURE

CONTINUOUS CONSTRUCTION GEN. CONT. EST. in close co-operation with its clients and vendors can provide total turnkey services from concept to completion along with project and construction management, with or without design.

Services offered are concept development, preliminary design, site selection, advance order of materials, program preparation, detailed design, procurement, price negotiation, site setup and mobilization, quality control, co-ordination programming and cost control, as built drawings and O&M manuals, fit-out and furnishing, hand over to client.

Civil Construction

Mechanical Works

Hydraulic bolt Torquing /
Tensioning

Industrial Construction

Asphalt Paving And Road Work
Services

Civil Construction

CCE is a civil and construction company that has built a strong reputation for delivering a quality service, on time, and at a competitive price. We pride ourselves on being skilled and experienced in all aspects of civil construction and this, combined with our extensive knowledge of the upper North Island market, has established us as major players in this industry.

Our commitment to innovation and excellence invariably results in a successfully completed project for both contractor and client. We understand and promote the idea of working as a partnership with our clients to ensure their goals are met.

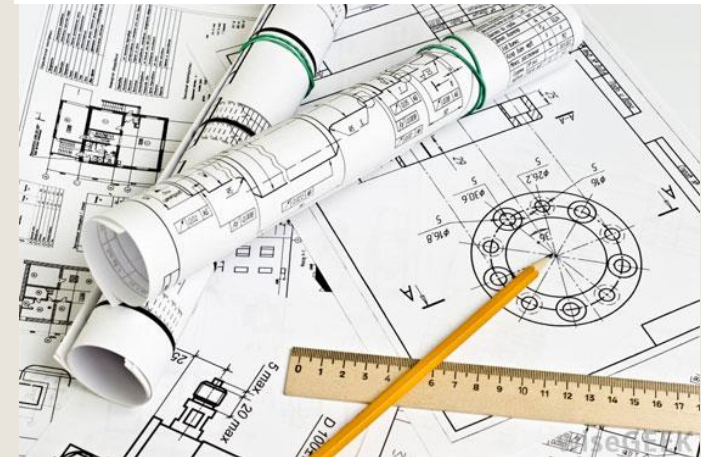
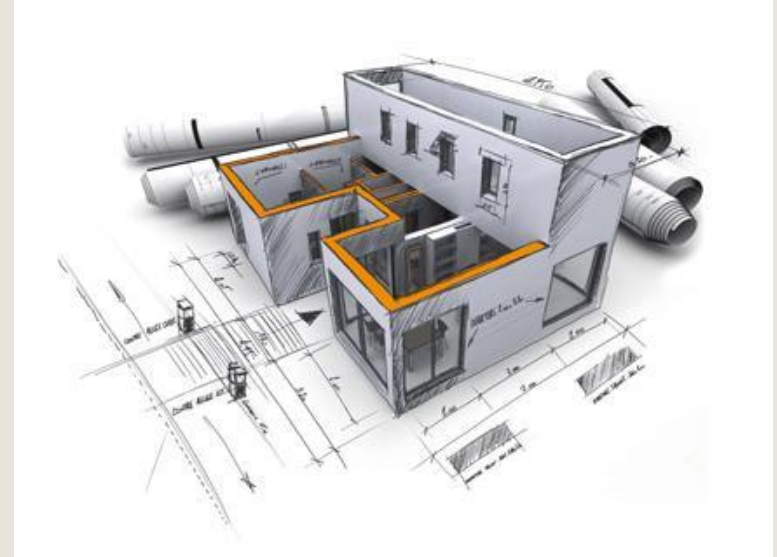
At CCE Civil we never rest upon our laurels and are passionate and driven to continue the high levels of customer satisfaction we have achieved over the past 15 years.

We undertake a variety of projects for a wide range of cliental – from small private developments to large Government projects. Our unique and flexible project management systems ensure that a positive outcome is achieved regardless of size or nature of the project

Earth moving, Site Development, Roads construction & Parking areas.

Residential, Industrial and Commercial Building Constructions.

Steel Fabrication and Installation. Above ground and Underground Utilities Installation.



Mechanical Works

Complete Procurement, Construction and Installation of Pre-Engineered Building.

Machine Foundations Design, Procurement and Construction along with Erection.

Fabrication, Installation and Erection of Steel Structure, GSM Towers.

Hydraulic Bolt Torquing / Tensioning.



Hydraulic Bolt Torquing / Tensioning.

HYDRAULIC BOLT TORQUING

Hydraulic Bolt Torqueing is a controlled bolt tightening method by stretching the bolt through turning the nut with hydraulic torque wrench, which means we are stretching the bolt by a predefined bolt stress.

CCE having a very vast rental stock which can cover from the minimum bolt via up to the maximum range of bolt for torqueing. CCE offers low profile hydraulic torque wrenches, when can be work on lower accessible complicated flanges. Hydraulic bolt torqueing is a specialized job, which needs competent technicians to perform the job. CCE is providing trained and competent technicians for carry out hydraulic bolt torqueing, and use of equipment which is correctly maintained and calibrated.

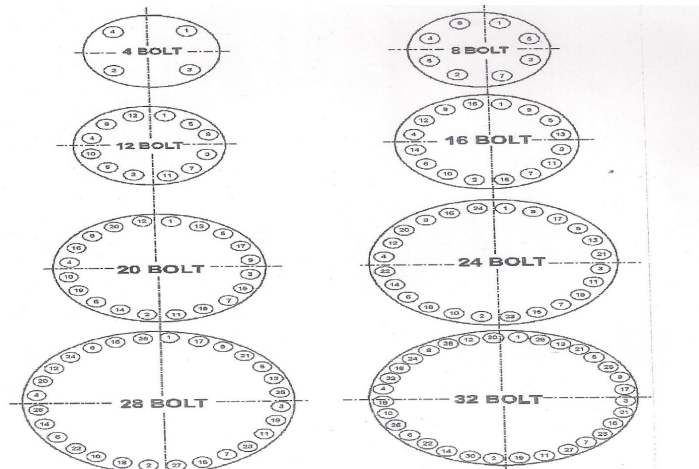
Following is the procedure which CCE applying for the bolt torqueing, Different procedures produces different results. Minimum Four pass tightening procedure. Three criss-crosses and one chase round

1st pass - 30% (Sequential order) 3rd pass - 100% (Sequential order)
2nd pass - 60% (Sequential order) 4th pass - 100% (Rotational Order)



DEFINITIONS

- * **AppliedBoltLoad** -The Loadappliedto the boltby means of a hydraulic torque wrench
- * **ResidualBoltLoad**-The loadremaining inthe boltafter bolttorqueing.
- * **FlangeManagementDatabase** – Software usedfor planning, managing andimplementing ‘JointIntegrity Assurance’
- * **Bolt LoadCalculation** -Boltloadcalculatedas per theclientspecifiedloads(CCEstandardbolttorqueingvalues)
- * **ToolOperatingPressure** -The hydraulicoilpressure to be appliedto thehydraulictorque wrench.
- * **Joint CompletionCertificate**– The reportcompletedgiving details ofthetightenedjoint
- * **Tag**-ATag, whichis affixedto thejointbeforeandafter tightening todetail joint status for quick verification and traceability .In CCE our certified QC will verifythe bolt load and he will issuethe Tag after completing the bolt torqueing.



BOLT TENSIONING

Hydraulic Bolt Tensioning is a controlled bolt tightening method giving axial force by stretching the bolt through a predefined stress. A hydraulic Tensioning device is applied to the stud. The device is pressurized, applying a direct axial force to the stud. The force reacts through the stud on the other side of the joint. This compresses the joint and causes the stud to stretch. The nut under the tensioning device is wound tightly down against the joint surface. The pressure is released from the tensioning device and the tensioning device can be removed from the stud.

CCE is providing 100% and 50% tensioning depends upon the joint nature.

50% Tensioning

Pressure A - (1st pass) Three times.

Pressure B - (2nd pass) Three times.

Break loose pressure on ' A' bolts

For ring type joints, hold pressure longer to achieve gasket compression.

100% Tensioning

2nd pass / pressure B only





DEFINITIONS

Applied Load minus Load loss = Residual Bolt Load.

Areas of Load when Tensioning

TLLF - Tool Load Loss Factor

This compensates for the amount of load lost when the applied load in the bolt is transferred from the tensioning tool to the nut.

FLLF - Flange Load Loss Factor

This compensates for load loss in previously tightened set of bolts as the next set of bolts as tightened.

Applied Bolt Load - The load applied to the bolt by means of a hydraulic bolt tensioner.

Residual Bolt Load - The load remaining in the bolt after bolt tensioning.

Flange Management Database - Software used for planning, managing and implementing 'Joint Integrity Assurance'

Bolt Load Calculation - Bolt load calculation as per the client specified loads (CCE standard bolt tensioning values)

Tool Operating Pressure - The hydraulic oil pressure to be applied to the hydraulic tensioner

Joint Completion Certificate - The report completed giving details of the tightened joint

Tag - A Tag, which is affixed to the joint before and after tightening to detail joint status for quick verification and traceability.

In CCE our certified QC will verify the bolt load and he will issue the Tag after completing the bolt tensioning.





NUT SPLITTING

A job that used to take 20-30 with a hammer and chisel can now be performed in 20-30 seconds. The auto splitter hydraulic nut splitter sets up fast 5 minutes from toolbox to actual use.

FLANGE SPREADING

CCE Technicians utilize a high load compact hydraulic cylinder together with a unique design wedge and retaining mechanism to smooth and evenly force open the flanged joint.

PIPE COLD CUTTING AND BEVELING

Our technicians can simultaneously cut and bevel your piping without the use of open flames or producing sparks in your facility. Cold cutting offers many advantages over the methods of pipe cutting. There is no spark or flame produced. Does not require lines to be gas free, in some instances it eliminates the need of hot work permit also.



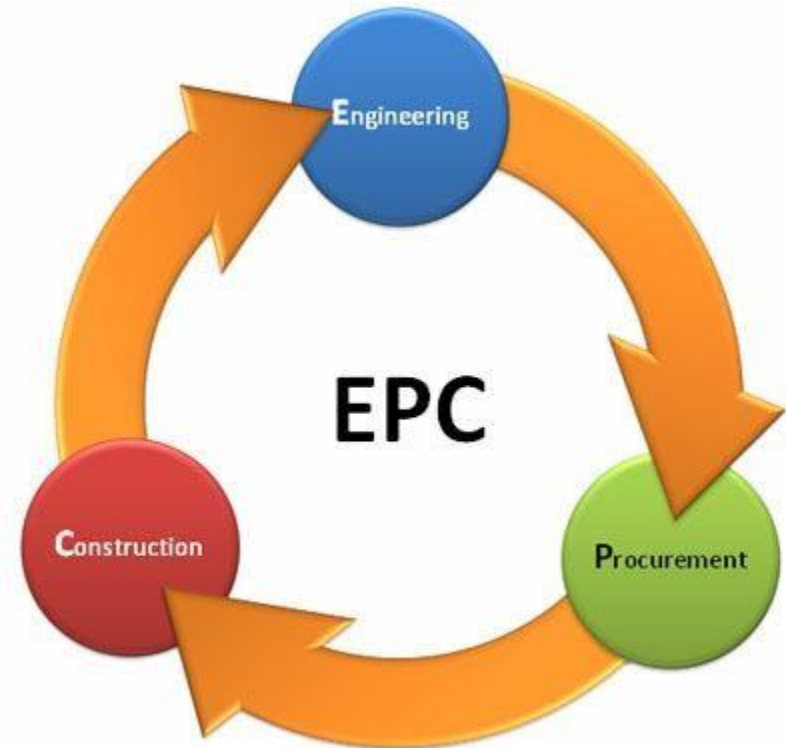
IN SITU MACHINING

Our in-situ machining capability encompasses a full range of tasks, completed to tight tolerance and in the most arduous environments. Many of our machine tools are air powered making them safe in hazardous locations

EPC - Engineering Procurement Construction

EPC stands for Engineering, Procurement, Construction and is a prominent form of contracting agreement in the construction industry. The engineering and construction contractor will carry out the detailed engineering design of the project, procure all the equipment and materials necessary, and then construct to deliver a functioning facility or asset to their clients. Companies that deliver EPC Projects are commonly referred to as EPC Contractors.

The EPC phase of the project is also known as the Execution phase which normally follows what is known as a FEED or Front End Engineering Design phase. The FEED is a basic engineering design used as the basis for the EPC phase. The FEED can be divided into separate packages covering different portions of the project. The FEED packages are used as the basis for bidding on when the client offers the EPC work to the market





Industrial Supplies

Industrial Supplies

we serve the heavy equipment & man power requirement within the country Kingdom of Saudi Arabia. ISD thus has the benefit of over 15 years of goodwill as well as enormous financial muscle to support and allow it to grow exclusively in its focused field of construction equipment.



MANPOWER

- Well experienced engineers, supervisors ,permit receivers & foreman (for all engineering department)
- Well experienced technician (all categories)
- Catalyst , hydrojetters, fitters, fabricators ,scaffolders & labours

Our service

Oil and Gas

Mechanical Products – Pipe, Valves, Flanges, expansion joints and fittings
Special Alloys Materials
Drilling Products
Wellhead spares, Blow-out Products, Flares, Heaters, Burners etc.
Pumps, Industrial Brushes, Filters and filter plates

Inspection Solutions

Ultrasonic, X-Ray and Eddy Current Inspection systems
Gamma Radioactive Sources and Radioactive Transportation Services
Radiation monitoring and Safety equipment
Remote Visual Inspection Products – Complete range
Conventional/Film and Digital Radiography systems
Positive Metal Identification equipment (PMI)
Girth Weld Pipe Inspection System
Online embedded Sensor system for Pipe Corrosion Monitoring
Complete range of Non-Destructive Testing (NDT) equipment and accessories

Asphalt Paving And Road Work Services

We undertake asphalt paving in Saudi Arabia and all kinds of road maintenance and earth work. Using our asphalt paving machines you can be assured not only of the high quality mix, but of solid compaction and precise slopes. In addition to being an asphalt paving company in Dammam, we also install cat eyes, spray road paint lines and markers and install and lay curb stones.

QUALITY OBJECTIVES

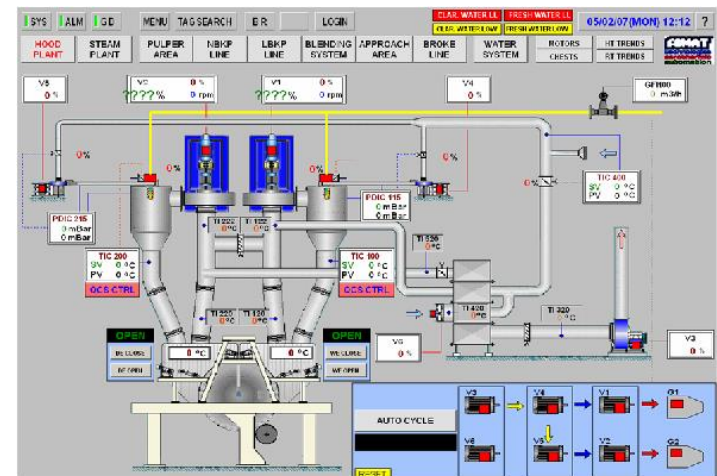
- * To deliver our clients the standards of quality specified in the contract within budget.
- * To create and maintain a culture of quality within the group.
- * To ensure that all our employees are trained in quality assurance and that this training is ongoing process at all levels.
- * To provide the resources necessary to achieve the required level of quality.
- * To ensure that quality control mechanisms are being sufficiently and effectively applied at all times and levels.
- * To provide documentary evidence of all quality control measures.
- * To ensure that all consultants, suppliers, sub-contractors and others who are involved in our projects meet the required quality standards.
- * To continually review, improve and implement quality control and best practice procedures as per internationally accepted standards



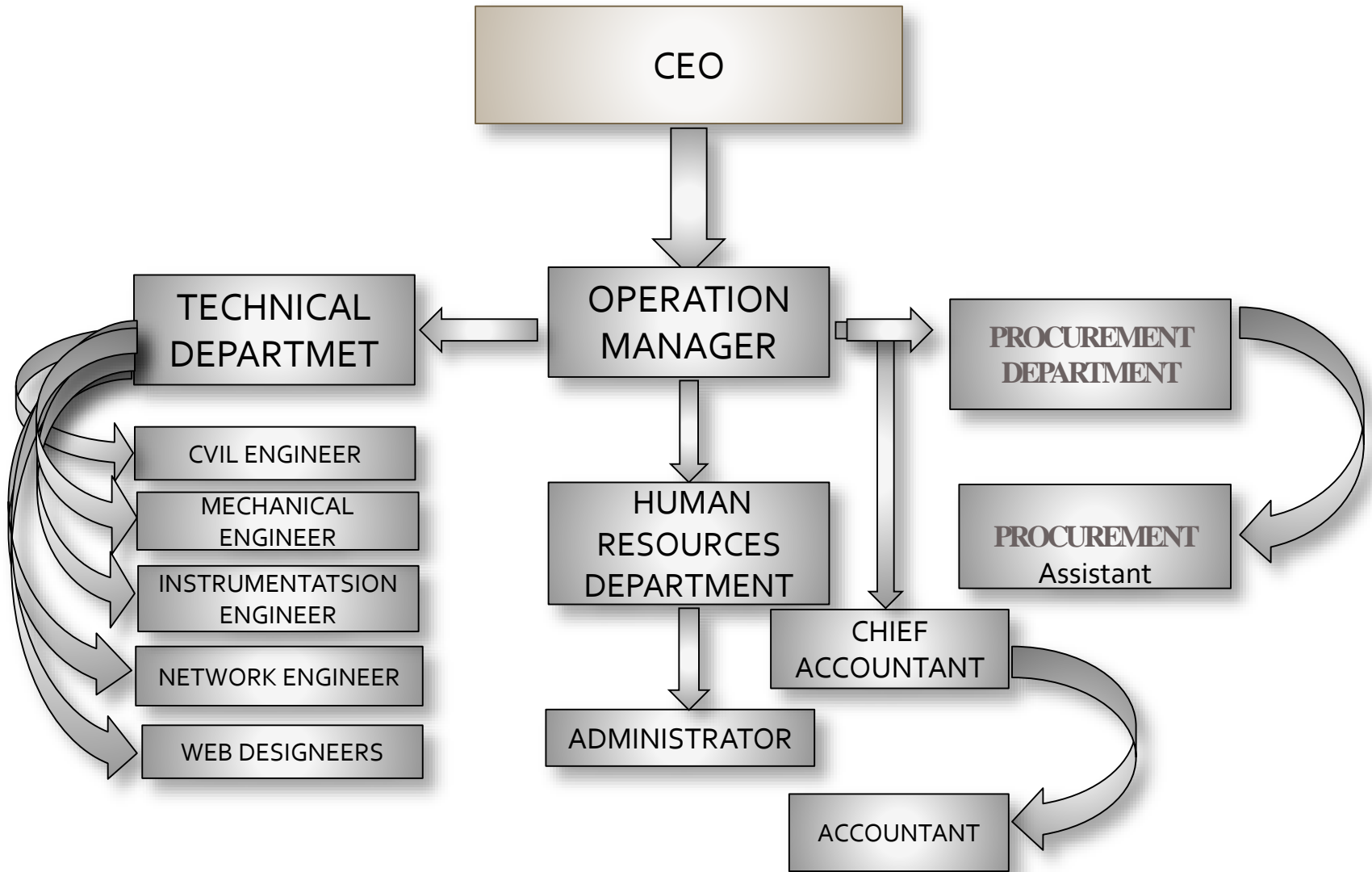
ELECTRICAL AND INSTRUMENTATION

Continuous Construction Est. (CCE) is a full service electrical contractor specializing in industrial electrical, communications, instrumentation, power, and control systems. CCE has installed systems in oil and gas, refining, manufacturing, material handling, mining applications, and commercial electrical construction. We are a direct hire company with a highly skilled team of technicians, installers, and programmers. With design build capability, ISA Certified Automation Professionals (CAP) and Certified Control Systems Technicians (CCST), CE&I can design and construct your entire electrical, communications, control systems, instrumentation, program the PLC/DCS, and optimize the systems to improve overall plant reliability. We perform new construction, retrofits, maintenance, and hot cutovers. Our expertise also includes shutdowns, turnarounds, comprehensive startup & commissioning services with a complete documentation package.

At CCE we work with our customers to custom tailor our services to meet their needs. We get to know the client company, their people, and their specifications. We adapt our systems to fit the customers needs and optimize results. We provide timely, versatile, and guaranteed services that meet or exceed customer expectations. We leverage our knowledge and experience to offer problem solving solutions in a safe, timely, and cost effective manner.



HIERARCHYAL SYSTEM OF CCE



QUALITY ASSURANCE

CONTINUOUS CONSTRUCTION ESTABLISHMENT established and implements an effective and documented project quality system to ensure adequacy in quality level, meeting or exceeding Client requirements.

CONTINUOUS CONSTRUCTION ESTABLISHMENT 's QA/QC engineer develops a quality assurance program, in accordance with the client requirements and CONTINUOUS CONSTRUCTION ESTABLISHMENT 's quality control system.

The quality plan will be submitted to Client for approval and the Project Management Team will be responsible to perform the quality assurance, control and inspection services in accordance with the approved Quality system and program. The Quality Plan will be submitted to Client within 45 days from the effective date of contract

The QA Manual will comply with the following minimum criteria

The various activities affecting the quality will be carried out within a system where organizational structures, functional responsibilities, levels of authority, as well as interface positions and lines of communication are clearly defined;

The above activities will be carried out in accordance with the procedures, to ensure an integrated approach to the quality level and provide proper quality control; complying with the requirements of Client PMT.



SAFETY & LOSS PREVENTION

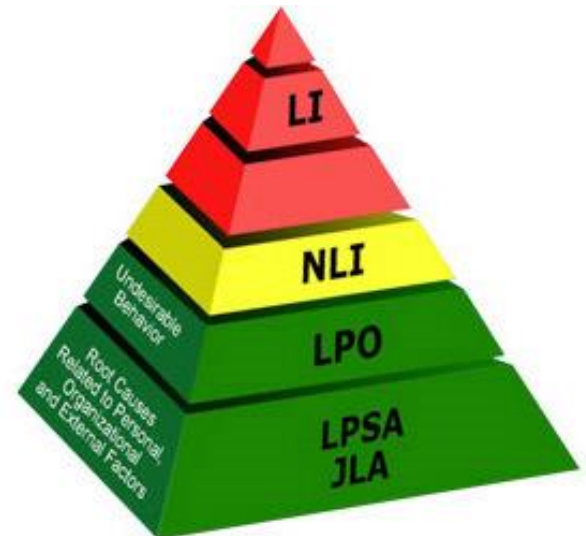
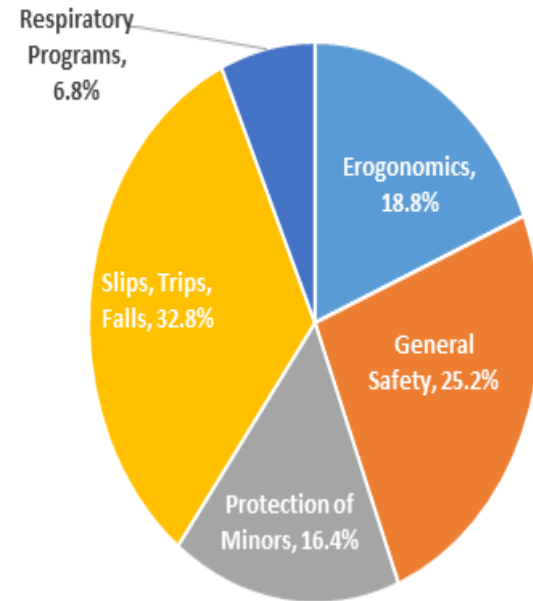
CONTINUOUS CONSTRUCTION ESTABLISHMENT will adhere to the applicable safety laws, standards, codes and regulations including any safety program established by Client while working in the premises of Client. CONTINUOUS CONSTRUCTION ESTABLISHMENT 's specific safety plan will be submitted and approved before the start of any work

CONTINUOUS CONSTRUCTION ESTABLISHMENT will, at all times, conduct our operations at the work site in such a manner as to avoid any risk of bodily injuries/fatalities to persons or damage to property.

CONTINUOUS CONSTRUCTION ESTABLISHMENT will provide safety orientation course to the site supervisors and workers. CONTINUOUS CONSTRUCTION ESTABLISHMENT 's Project Safety manager/officer will take all precautions to safe guard against such risks and will conduct regular safety inspections at the construction facilities, materials, tools and equipment storage in on-site and off-site locations.

CONTINUOUS CONSTRUCTION ESTABLISHMENT will maintain accurate accident and injury reports and will inform Client PMT in a timely manner and, where required, will furnish Client PMT with summary of man-hours lost due to injuries

LOSS PREVENTION FISCAL YEAR 2015



PLANNING AND SCHEDULING

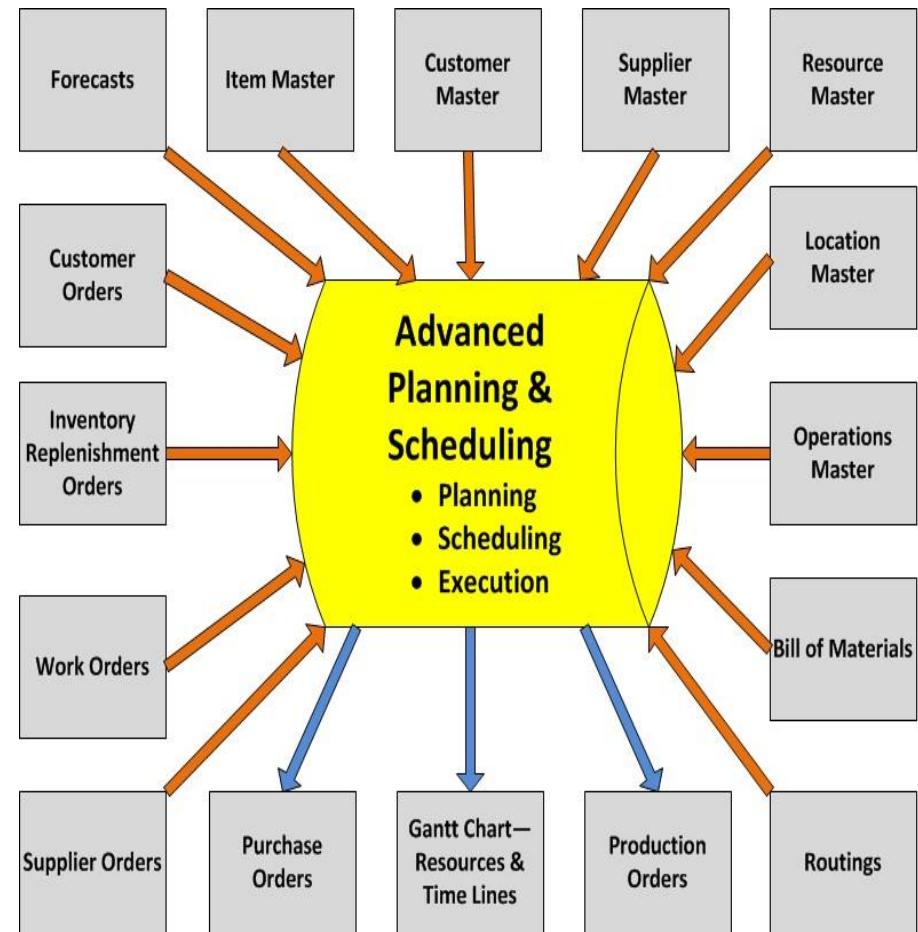
Continuous Construction Establishment uses the latest PRIMAVERA project management software P6 for planning and scheduling in all their projects.

After getting the Notice to Proceed (NTP) from the client, our Planner/Scheduler will prepare the CPM method of schedule. The CPM schedule will show all activities and sequence of operations needed for the orderly performance and completion of every separable part of the Work. The Overall schedule includes mobilization, project management, procurement, construction, testing, pre-commissioning, commissioning, start up and demobilization. After having incorporated all the logical relationship between various activities in the schedule, practical and realistic critical path activities will be identified. Close monitoring will be done on all critical activities to avoid any potential delay in the project duration.

The Schedule will be prepared considering each work area based on the milestone schedule dates and a standard activity breakdown. All important dates will be reflected in the overall schedule.

The overall schedule includes the following:

- Milestone schedule;
- Project target schedule;
- Project current schedule;
- Project look ahead schedule;
- Manpower loading;
- Progress Reports.



PROJECT REPORTING & MONTHLY REPORTS

PROJECT REPORTING

CONTINUOUS CONSTRUCTION ESTABLISHMENT 's project reporting procedure includes daily, weekly and monthly progress report

MONTHLY REPORTS

Two sets of monthly progress reports will be submitted every month, one week prior to end of each month, detailing the progress of the activities executed in the month by each discipline and those planned for the succeeding month.

The progress measurement graphical submissions and reports will contain mainly the following:

Bar chart with critical path for each separable part of work planned and actually executed in the month;

Progress report on the activities for the planned and actual percentage completion, completed weighted percentage, remaining percent to be completed;

Detailed 'S' curve showing actual percentage completion with the planned scheduled progress ;Detailed one-month look-ahead schedule with planned percentage;

Monthly resource utilization report

Schedule of procurement and material delivery to site;

A weekly and monthly abstract report will contain to date actual progress, to date scheduled progress, to date cumulative actual progress, to date cumulative scheduled progress, to date cumulative used man-hours, to date cumulative scheduled man-hours, etc;

Analysis of work schedule including, action taken or planned to maintain or revise the program of work and the comments on any significant future events.

Schedule & Tasks



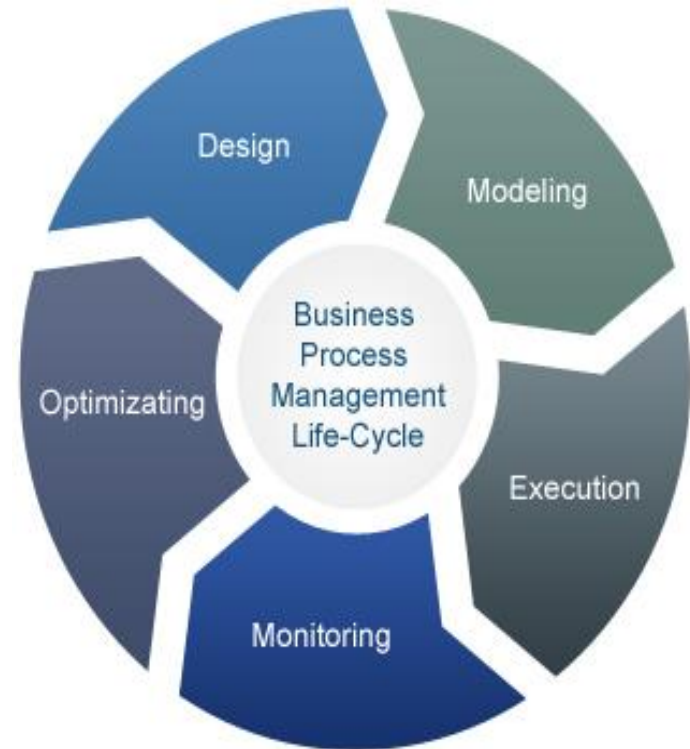
Tasks completed this period	Tasks planned next period	Tasks Not Completed
<ul style="list-style-type: none"> System Design. Business Case. Development kick-off. Resource planning. 	<ul style="list-style-type: none"> QA Plan. Change Request Estimation. Complete Development and test case library. 	<ul style="list-style-type: none"> Business Case sign-off. QA Plan sign-off.

BUSINESS PROCESS

CONTINUOUS CONSTRUCTION

ESTABLISHMENT has built numerous grass-roots refineries, aromatic plants, . Through our dedication and technical ability, we have become a trusted partner to major state-run oil companies SAUDI ARMCO , SAMSUNG Engineering , Hydratight, etc. In recognition of our international reputation as a fully matured EPC firm, we were recently sub contracted to build the largest aromatics plant in the Saudi arabia, as well as to singlehandedly perform U&O (Utility and Offsite) management for a \$10 billion refinery

In the near future, we plan to expand our list of supported products and services to include advanced refinery facilities and, through that, to emerge as a major refinery specialist capable of catering to a wide variety of industry needs.



LIST OF MAN POWER

SI. No	TRADE DESCRIPTION	QTY
1	Project Manager	3
2	Engineers	8
3	QA Manager	1
4	QC Manager	2
5	Planner/Scheduler	2
6	QC Inspectors	6
7	Supervisors	12
8	Surveyor	2
9	Foreman	12
10	Electricians	8
11	Structural Welders	10
12	Erectors / Fabricator	6
13	Carpenters	24
14	Mason	20
15	Steel Fixers	18
16	Plumbers	6
17	Painters	10
18	Light Drivers	8
19	Heavy Drivers	20
20	Heavy Equipment Operators	22
21	Labour	142
TOTAL		342

LIST OF EQUIPMENT AND TOOLS

DESCRIPTION	QUANTITY
BUS (50Seater)	8
SUV 4x4	6
Pick – up 4x4	12
High Bed Trailer	2
Dyna Truck	2
Water Truck	2
Dump Truck	6
Combination Backhoe (JCB)	2
Backhoe (225)	2
Grader 4G	2
Loader 966 & 986	3
Steel Roller Compactor (10Tons)	2
Asphalt Paving Machine	1
Rubber Roller Compactor	2
Mini Loader (Bobcat)	2
Plate Compactor	5
Concrete Vibrator	4
Welding Machine	11
Surveying Instrument	2
Leveling Instrument	4
Air Compressor 600 CFM	2
Asphalt/Concrete Cutter	4
Jack hammer	8
Sandblasting Machine	1

FLAGSHIP PROJECTS

No.	Project	Client
01.	Asphalting works for Parking Area	NORDIC Systems
02.	Construction of Warehouse	NORDIC Systems
03.	Excavation, Backfilling and Leveling	Seyada LLC
04.	Foundation and Concrete Slab for Warehouse	Al-Awahi Gen. Cont.
05.	Construction of Warehouse Foundation and Floor Slab	Noor Carton Factory
06.	Asphalting Works for Service Road	Al-Hussaini United Co.
07.	Excavation, Backfilling and Leveling	Dahran Mall
08.	Prince Moh'd University Gates Modification	Aziziyah
09.	Asphalting works for King Fahad Rd, Omar Bin Khattab Street	Sinopec Intl Co.
10.	Asphalt wok area	Capital Light Co.

FLAGSHIP PROJECTS

No.	Project	Client
11	Extension of existing drillsite pad within Aramco	Ahmed M. Faraj Gen. Cont.
12	Backfilling,Asphalting,Engineering,Supply,Construction etc.	Sband Contracting
13	Transmitting treated water from Al khobar STP to Al Hasa irrigation channel	Sinopec Saudi Arabia
14	Asphalt paving works	Greentop Power projects Co. Ltd
15	Asphalt paving works at SADAF-saudi petrochemical company by Tamimi	Expertise Industrial Services
16	Construction of temporary facilities at safaniyah saudi Aramco	Joud United Contracting company Ltd.
17	Asphalt paving works @ berry gas plant for Wasit lateral tie-in@Berry gas plant,KGP&Khursaniyah WIP	Al Suwaidi Ind. Services Co. Ltd.
18	Asphalt Paving Works,Backfilling and excavation @ abqaiq chamber of commerce	SRACO

Concrete pouring site no. ZBH931A



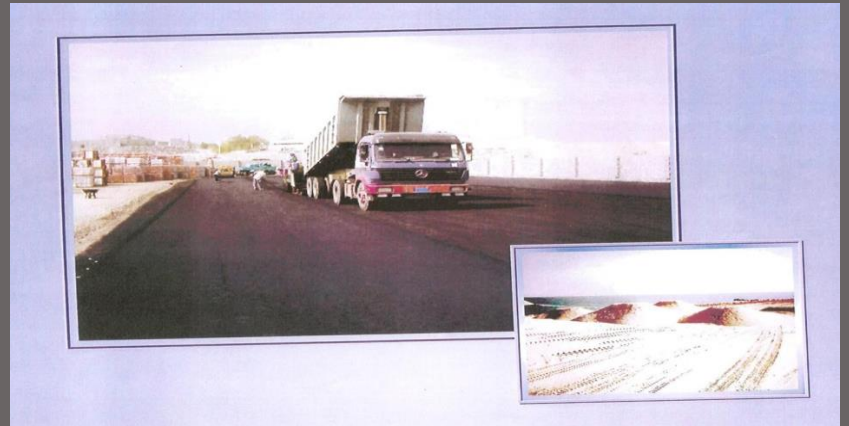
08-Nov-08 3:50 pm







07/09/2009



OUR CLINTES

